



Tinker Bell Project

~ a Communication Agent makes your Friendship ~

Nakanishi J.¹, Sakatani Y.²

1) Grad. Eng. Sci., Univ. Osaka, 2) Grad. Inf. Sci. Tec., Univ. Osaka

INTRODUCTION

Now

Hello!



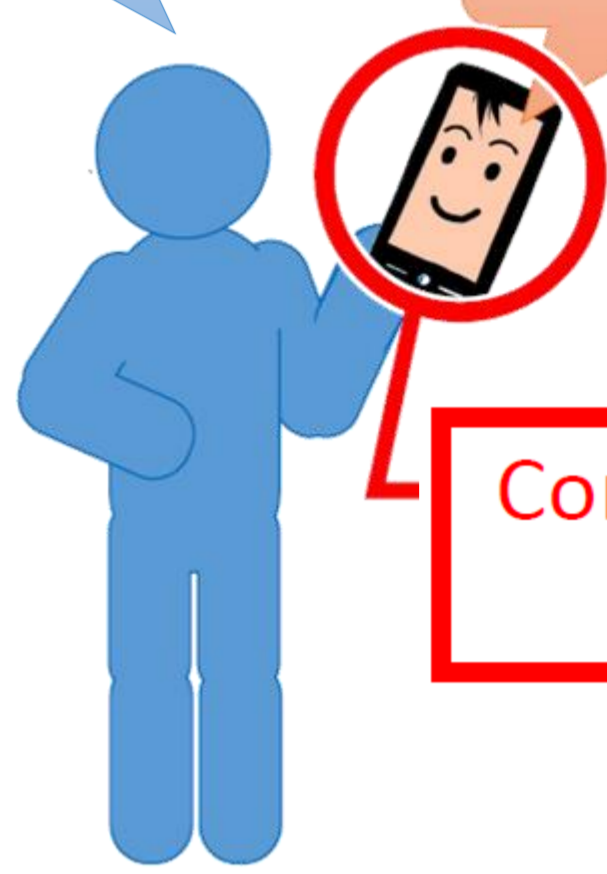
Communication Medium

You use Communication Media such as phones and PCs when you want to get information.

Future

Oh my God!

What's up?

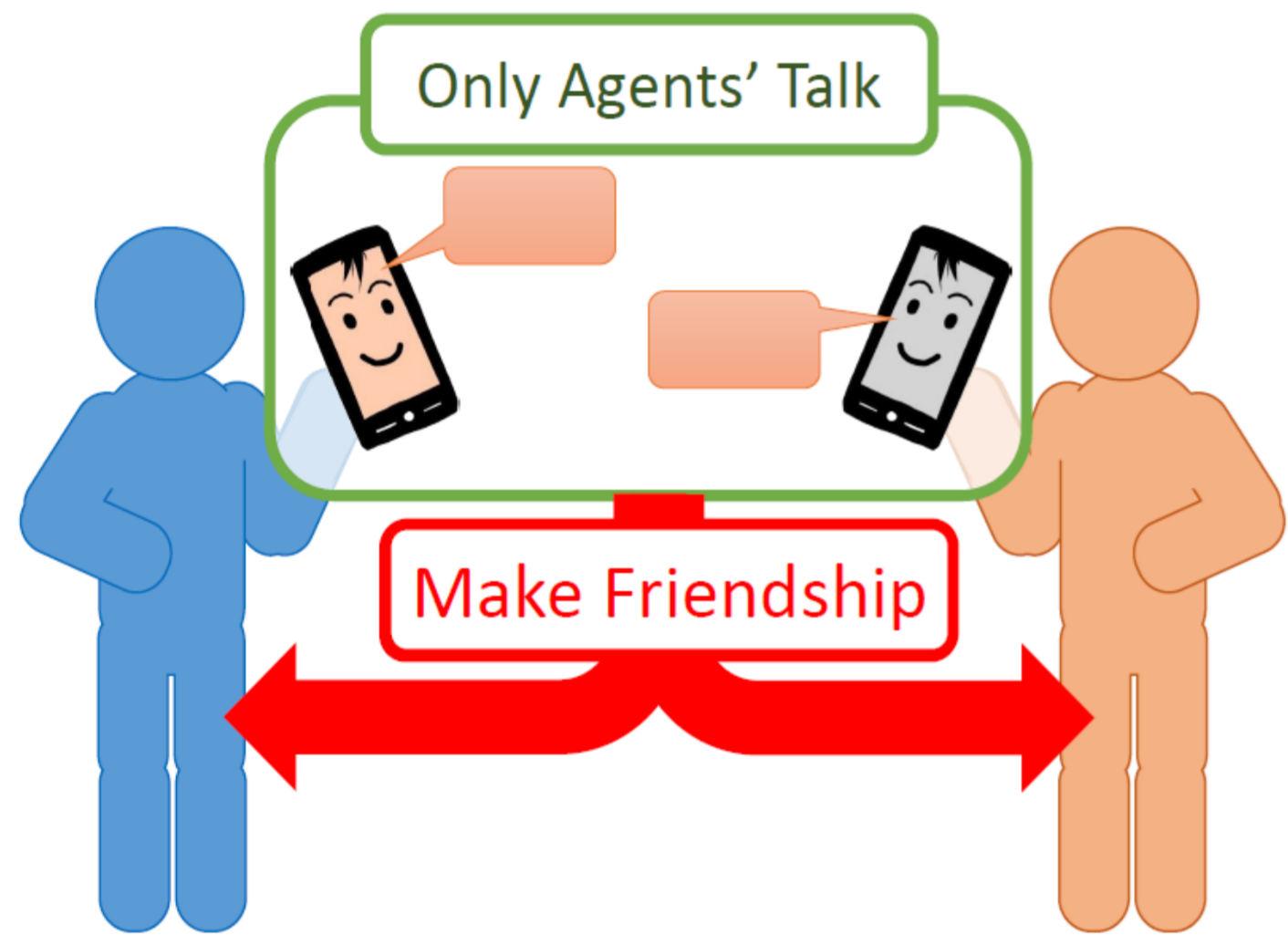


Communication Agent

We expect that the media have conversational intelligence and become communication agents as your best mate.

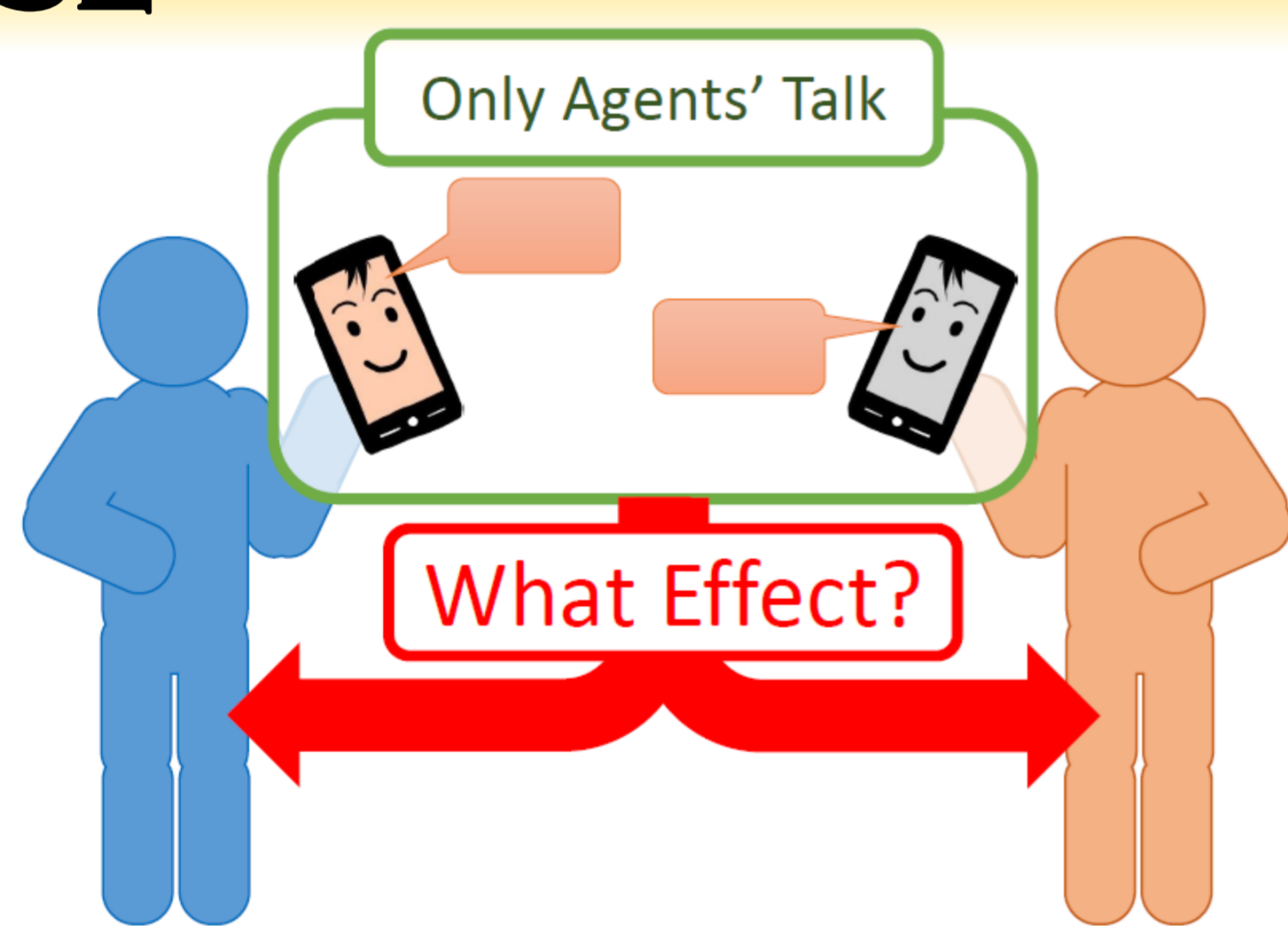


Now Future Focus



Communication Agents may be able to mediate their owners' friendship.

PURPOSE



- Examine the effect on owners' relationship by a Only Agents' Talk.
- Show possibility that people can recognize Non-human Communication Agents as their social surrogate.

PROSPECTS

Expected results

Subjects come to have more positive feelings for another subject under condition B than C. Perhaps the result of B will be as well as A.

Future work

We hope to become able to assign communication part to artificial intelligence. And artificial intelligence will help us make human relations frequently. So we will develop this research to make social conversation agent.

EXPERIMENT SYSTEM

Experiment procedure

- Subjects have interaction with another subject.
- Evaluate subjects' feelings for another subject.

Interaction Condition (A, B, C)

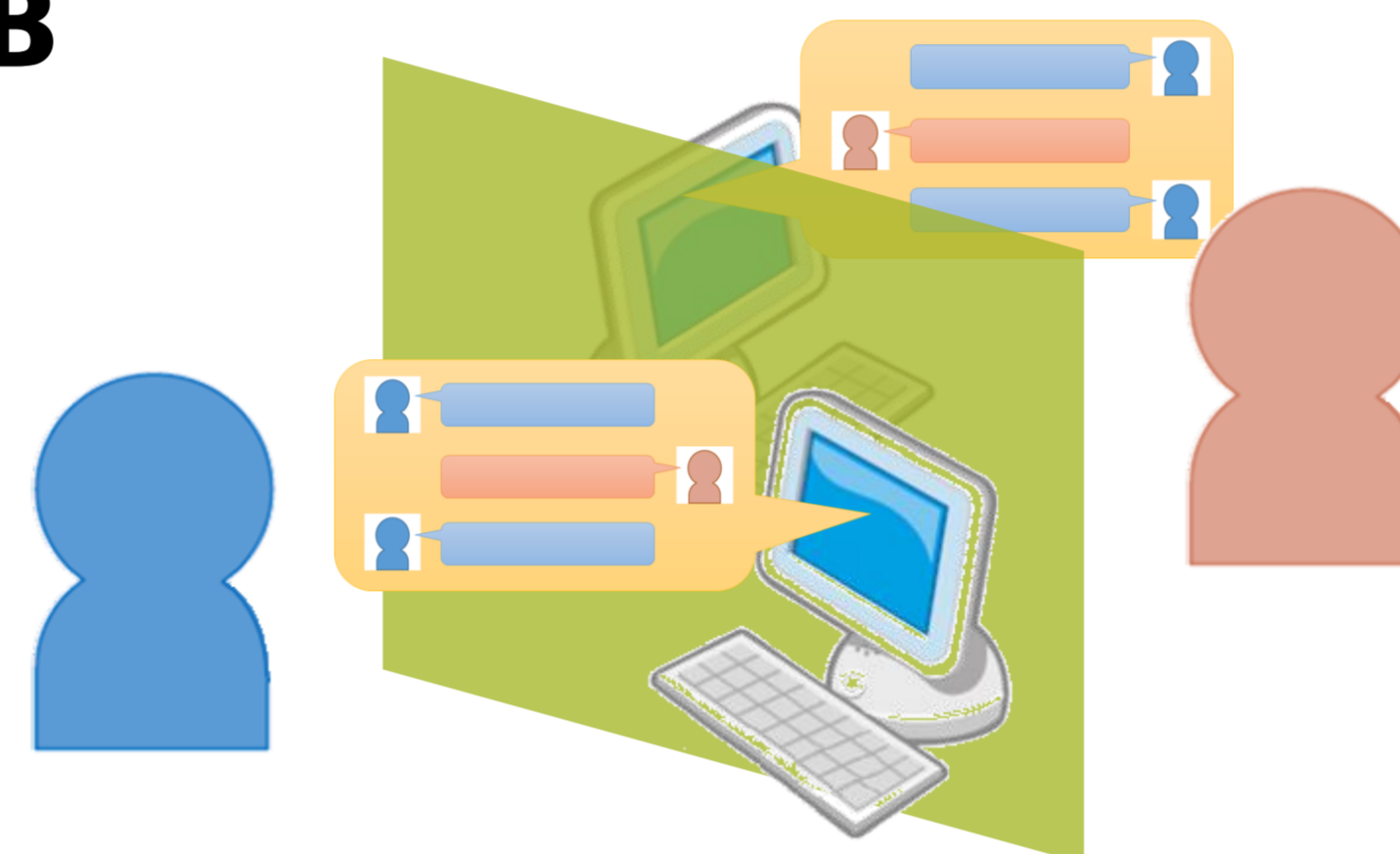
A



A : Do Internet chat with another subject.

Subjects do Internet chat with another subject. We expect that chats make any relationship between the subjects.

B



B : See internet chat logs between agents

After subjects interact with their agents individually, the agents start Internet chat and then they see the chat logs.

C



C : See another subject's profile

Subjects only see another subject's profile each other. We expect that they don't have an interest in each other comparatively.

Evaluation

Trust game (evaluate trust)



First, you get some money for a reward. You decide the amount of money to give another subject from your holdings. The person gets a reward of several-fold money you gave. Then, the person can return some money to you, and you know the fact in advance. We can evaluate your trust in another subject according to how much money you gave firstly.

Questionnaire (evaluate attraction)

How do you feel about another subject?
Impression, character, another subject's feelings

表1 形容詞対

明るい	1	2	3	4	5	暗い
積極的な	1	2	3	4	5	消極的な
有能な	1	2	3	4	5	無能な
親切的な	1	2	3	4	5	不親切的な
客観的な	1	2	3	4	5	主観的な
前向きな	1	2	3	4	5	後ろ向きな
敏感な	1	2	3	4	5	鈍感な
開放的な	1	2	3	4	5	閉鎖的な

Subjects assess another subject by some pairs of adjectives interrelated with attraction using points tables such as 表1. We evaluate attraction subjects feel for another subject.